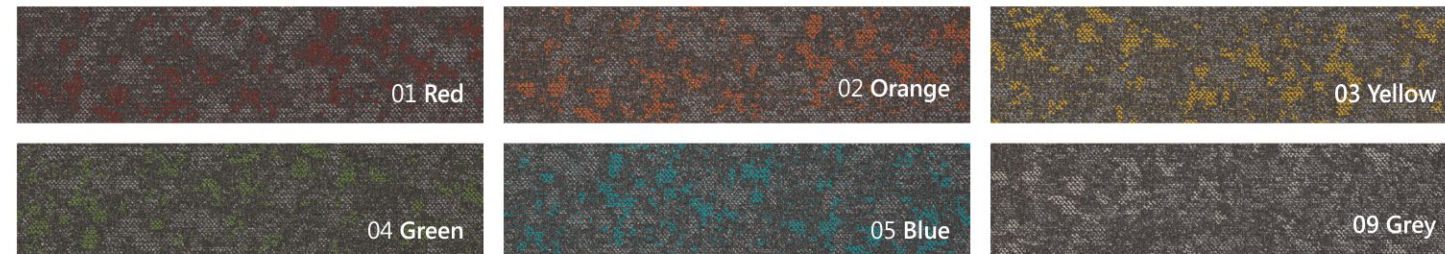


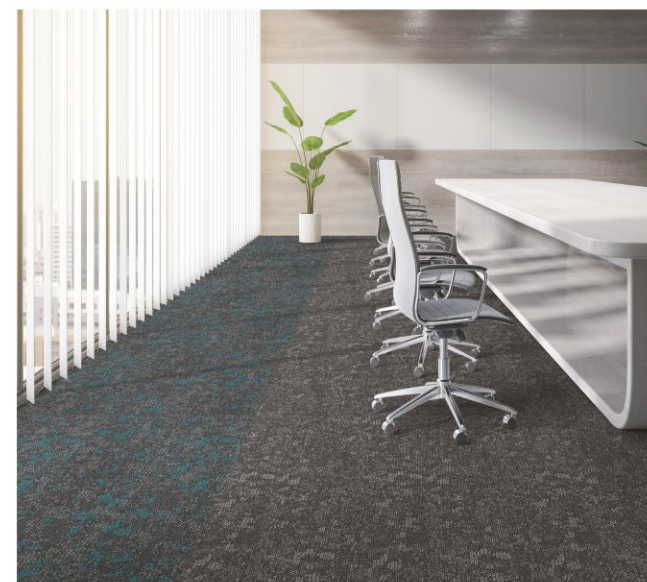


# RESERVE

CARPET PLANK



Style Name	Reserve
Construction	Multi-level loop
Yarn	100% Polypropylene
Color System	100% Solution Dyed
Gauge	1/12
Stitches	10.5 per inch
Pile Height	4mm
Pile Weight	640±10g/m <sup>2</sup> (19 oz/yd <sup>2</sup> )
Second Backing	Bitumen
Tile Size	25cmx100cm
Tile total weight	3400±100 g/m <sup>2</sup>
Installation Method	Monolithic, Quarter turn, Ashlar and Brick
Packing	20 Planks/Carton (5sqm/Carton)



## PHYSICAL PROPERTIES



Dimensional Stability Tests :	Passes (Both contraction and expansion)
Color Fastness :	Passes Light Test-AATCC 16E Rating 4
Tuft Blind :	Passes CNS 1359-62.7KGF
Flamability Pile Test :	Passes D.O.C FF1-70 7 of 8 Pass
Wear Resistance :	Passes (Abrasion -CNS 13595-9>40mg)
Wear Classification :	Heavy Duty
Anti Static :	Passes Static Load CNS 13954-7 10.2% 24hr Recovery

## DISCLAIMERS

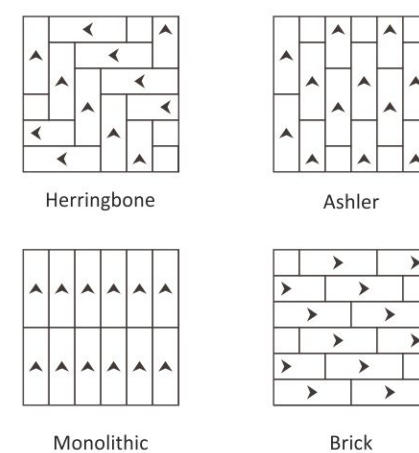
- According to international Carpet manufactured norms color may differ from dye lot to dye lot within tolerance.
- Please take note of the day lot number on the cartons before installing the tiles.
- Recommended laying of Carpet tiles : Checkered board pattern.



RESERVE CARPET PLANK

# RESERVE

CARPET PLANK

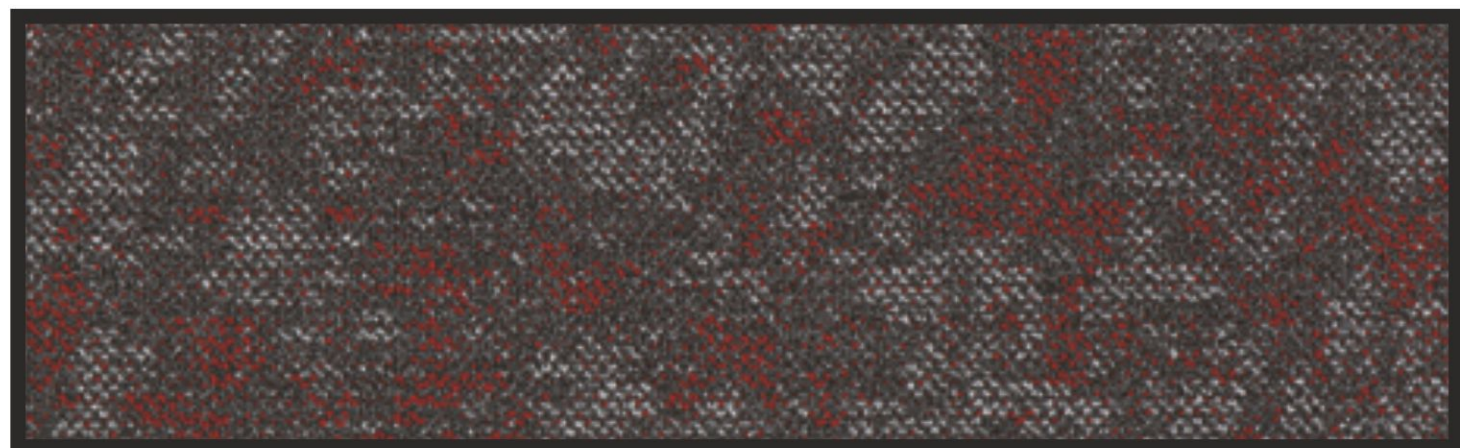


MARKETED BY :

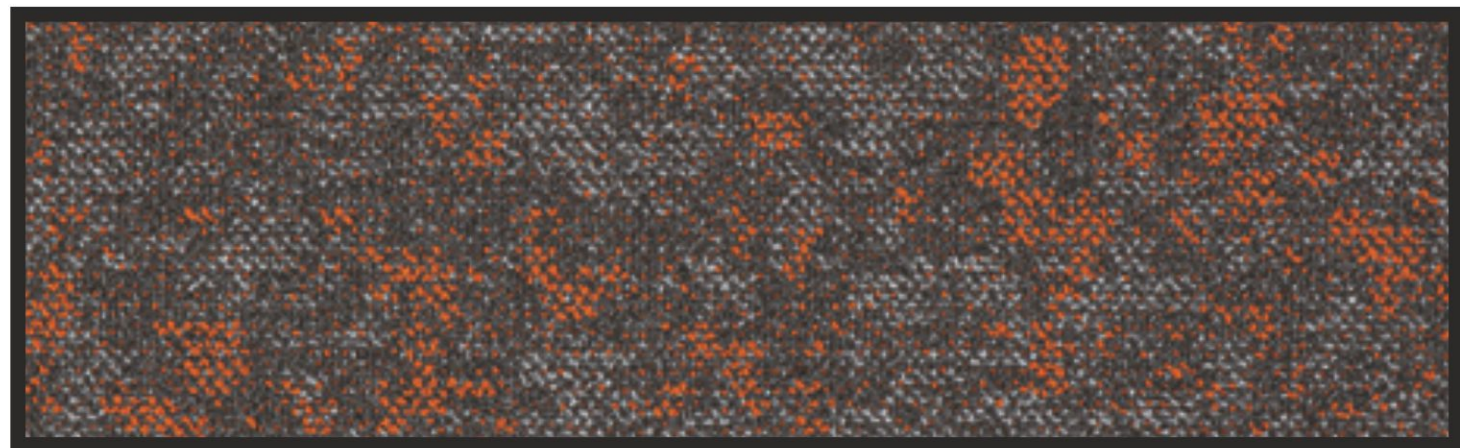


GREZZO

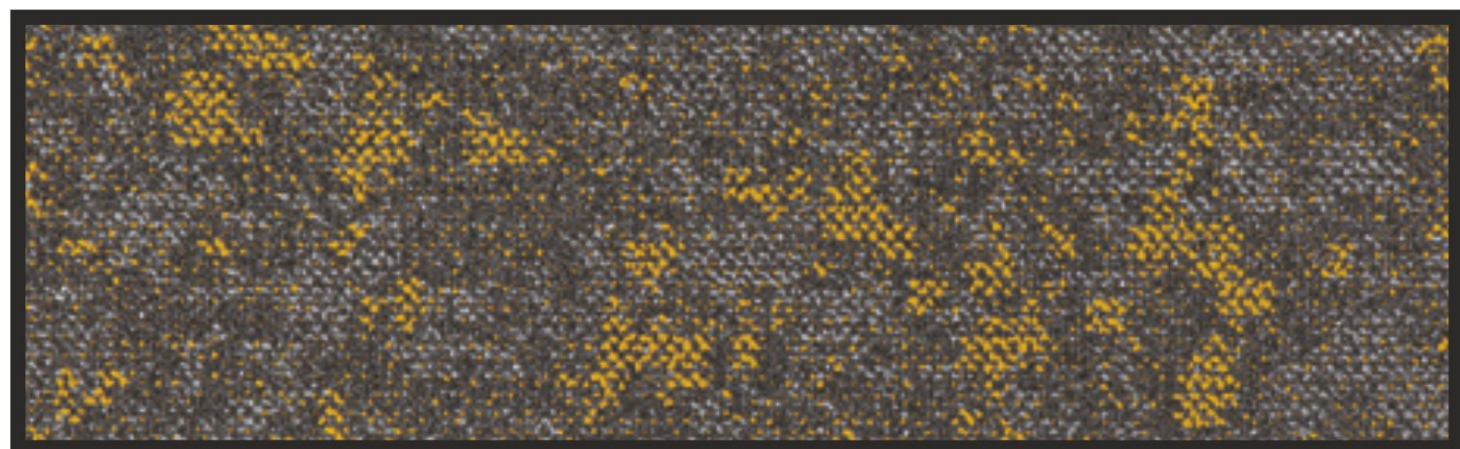




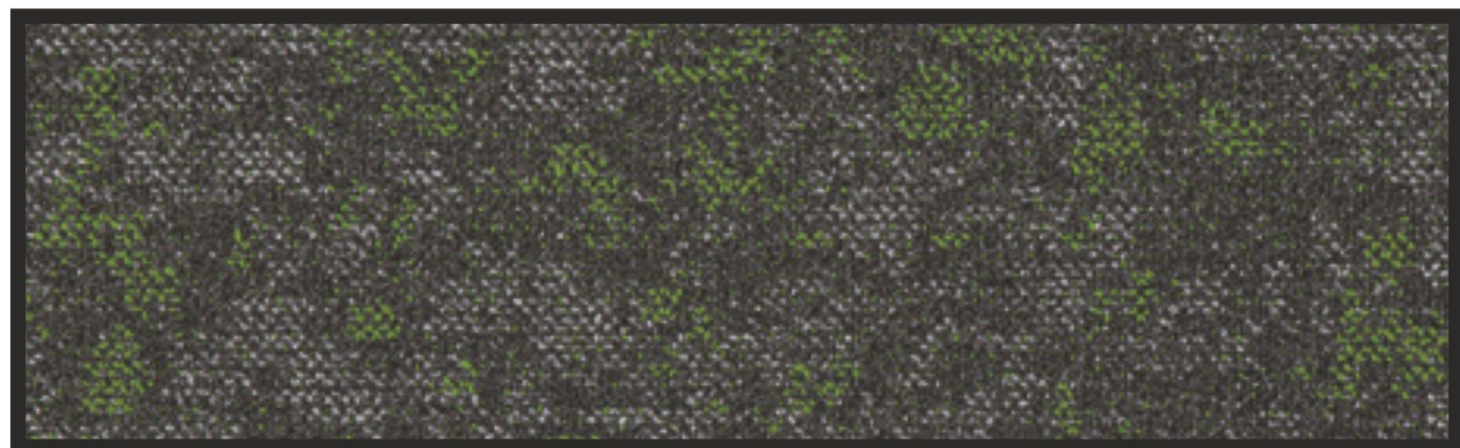
01 Red



02 Orange



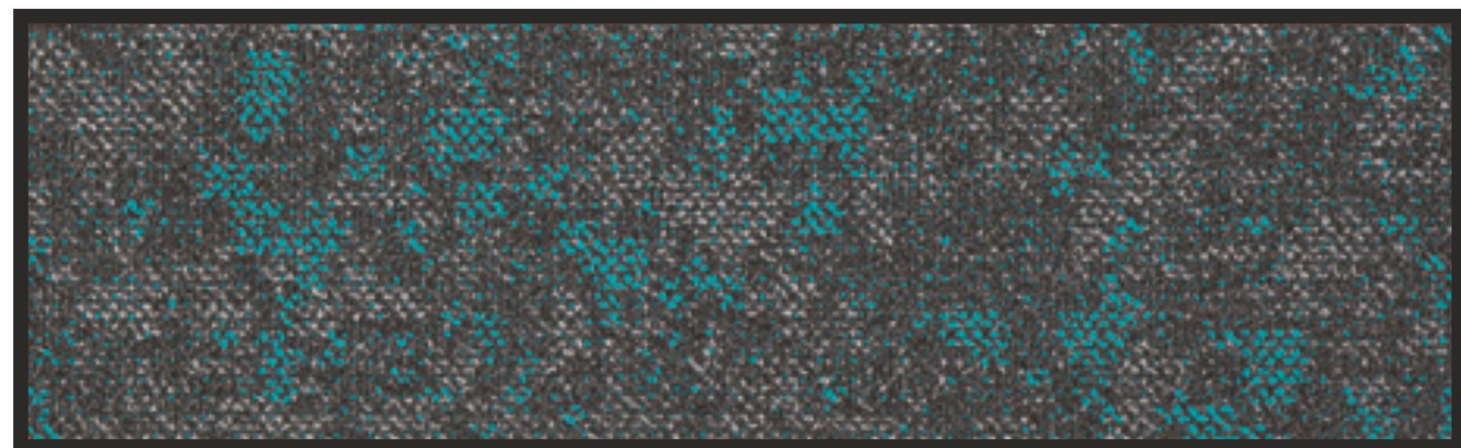
03 Yellow



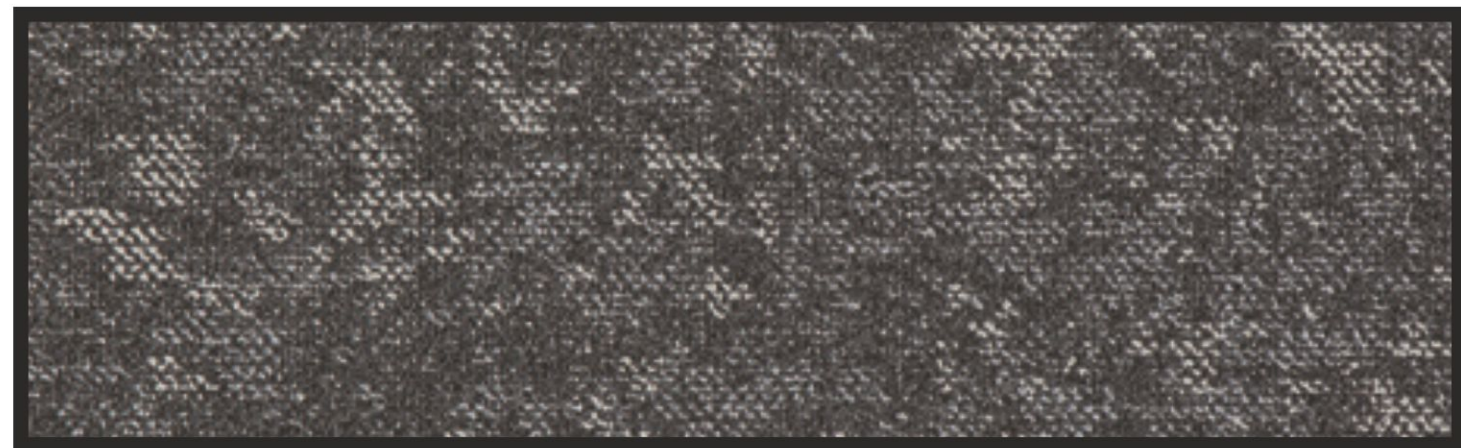
04 Green



RESERVE CARPET PLANK



05 Blue



09 Grey

Catalogue